



User Guide

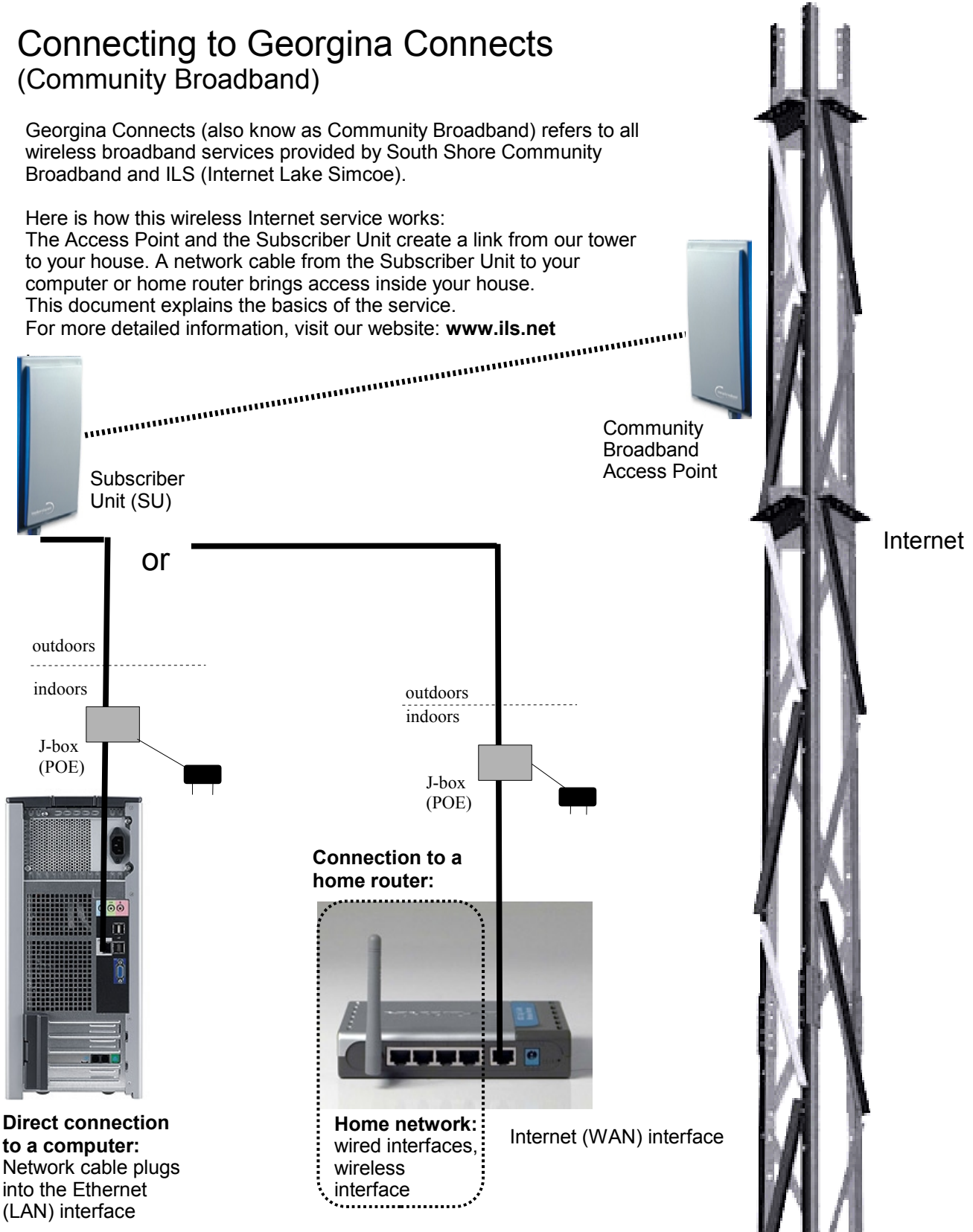
1 Church Street, Unit 6, Keswick ON, L4P 3E9, (905) 476-1011, email: admin@ils.net, web: www.ils.net

Connecting to Georgina Connects (Community Broadband)

Georgina Connects (also known as Community Broadband) refers to all wireless broadband services provided by South Shore Community Broadband and ILS (Internet Lake Simcoe).

Here is how this wireless Internet service works:
The Access Point and the Subscriber Unit create a link from our tower to your house. A network cable from the Subscriber Unit to your computer or home router brings access inside your house.
This document explains the basics of the service.

For more detailed information, visit our website: www.ils.net



The difference: straight computer connection or Home Network

There are two ways to connect to Georgina Connects:

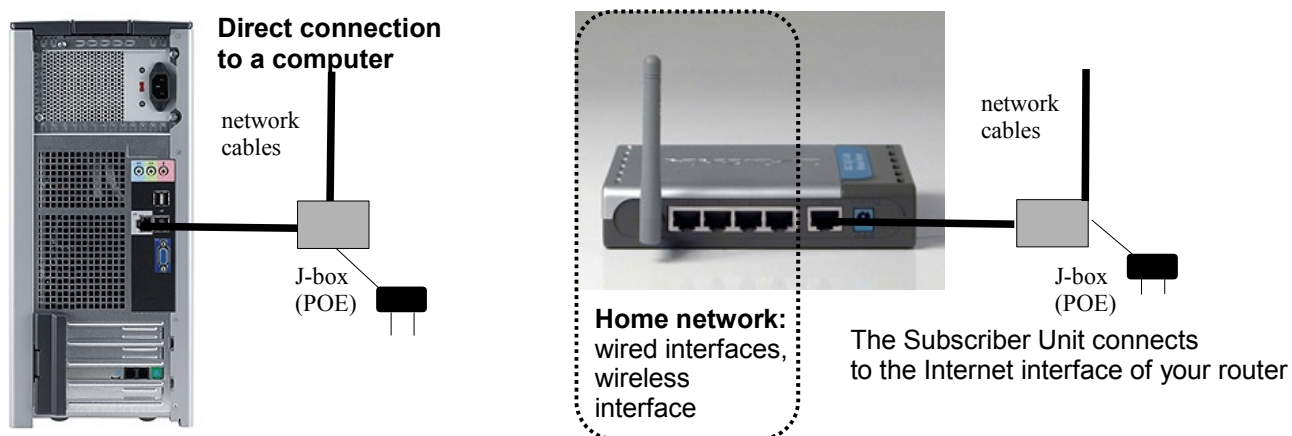
Our installer will set up the connection to whatever is available at the time of installation, direct connection to your computer or to your home network router.

Direct connection to a computer:

- simple, fast low latency connection
- easy setup, basic settings
- reliable, not much can go wrong
- only one computer can connect, no wireless network inside house

Connection through a Home Network router:

- allows more than one computer or Wifi wireless device (laptops, smart phones) to connect
- many routers can drop settings and need occasional resetting
- **not part of your Internet service, not installed or supported by ILS**



Using Home Network routers

The monthly service fee you pay to ILS is for your Internet connection. It does not include installation, support or maintenance of private networks of your home or office. There are hundreds of different Home/Office network routers. Even between the dozens of Linksys and Dlink models, the interfaces, prompts and terms used vary. The source for instructions is the router's user manual. **ILS does not provide support for these devices.**

Georgina Connects is designed to be an affordable, very fast broadband connection for homes and small offices. We have different types of connections available for medium size offices or corporations with large numbers of computers. The maximum number of computers connected to one residential account is three (business: five).

The basic guideline for using routers: Set the router's Internet interface to obtain IP address to Automatic (DHCP) – this is the default setting for all routers so you should not have to change it. Set the router's wireless service for a unique Network name (SSID) and encrypted password (keyphrase) according to the router's instructions.

Warning about wireless home networks – protect yourself against crime

The Georgina Connects network is protected. However, your wireless Home Network may be wide open to credit card and identity theft, access for predators and other criminals. It is important to understand that any activity committed under your connection happens under the name of the account holder.

Please read your Terms and Conditions about **re-distributing** your internet connection. All traffic through the CommunityBroadband and ILS networks are monitored and the origin of all packets can be traced to the account holder.

Your computer's network settings

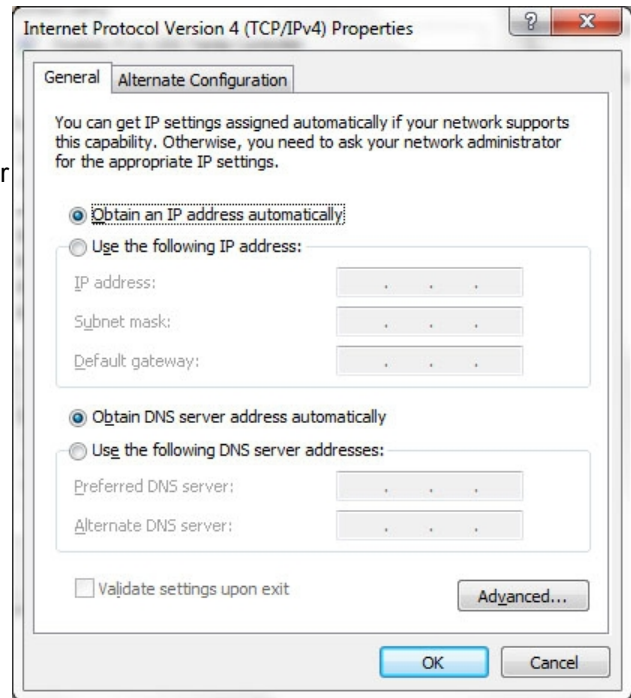
All computer operating systems, Windows, MacOS, Linux, have DHCP as the default network setting. Starting September 2011, this is also the default setting for all types of Georgina Connects connections.

Window XP: Control Panel > Network Connections > Local Area Network > (right click) Properties > Internet Protocol TCP/IP > Properties

Windows Vista Home Premium: Control Panel > Network and Sharing Centre > Manage Network Connections > Local Area Network > (select) Internet Protocol Version 4 (TCP/IPv4) > Properties

Windows 7: Control Panel > Network and Sharing Centre > Change Adapter Settings > (right click) Local Area Connection > (select) Properties > Internet Protocol Version 4 (TCP/IPv4) > Properties

MacOS: System Preferences > Network > (highlight) Built-in-ethernet > Configure > TCP/IP > Configure Ipv4 > Using DHCP



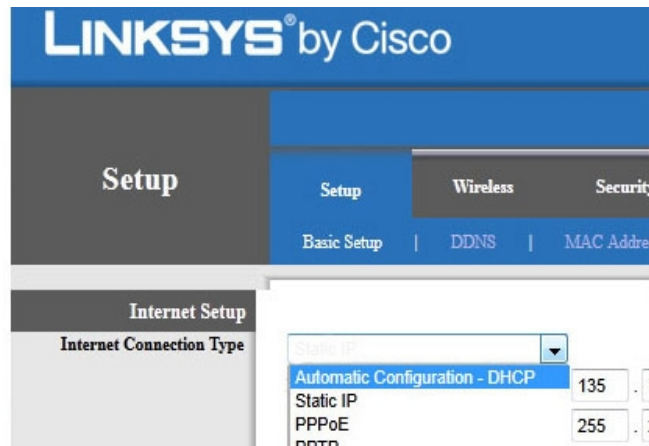
Your router's network settings

All routers have the right setting – DHCP – as their factory default setting. However, if it was at some point changed to Static IP or something else, you can change it back to default.

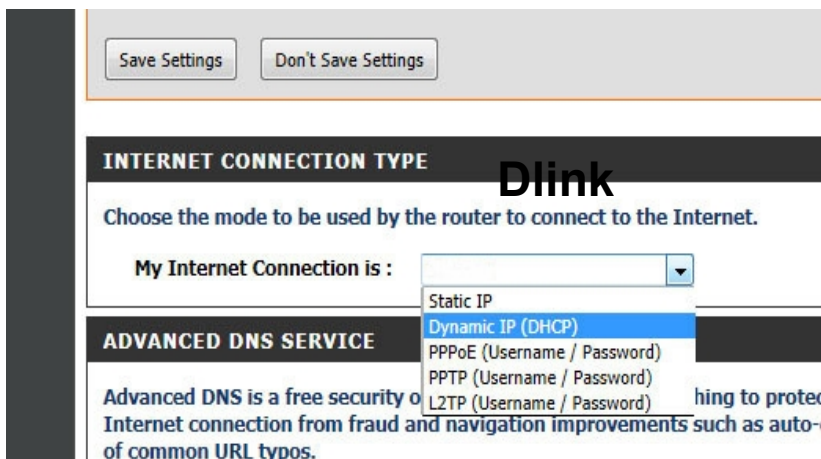
Connect to your Linksys router with a web browser:
<http://192.168.1.1/>
 Username: admin password: admin
 Change (if necessary) Internet Connection Type:
 Automatic Configuration – DHCP

Connect to your Dlink router with a web browser:
<http://192.168.0.1/>

Username: admin
 no password
 Change (if necessary) Internet Connection Type:
 Dynamic IP (DHCP)



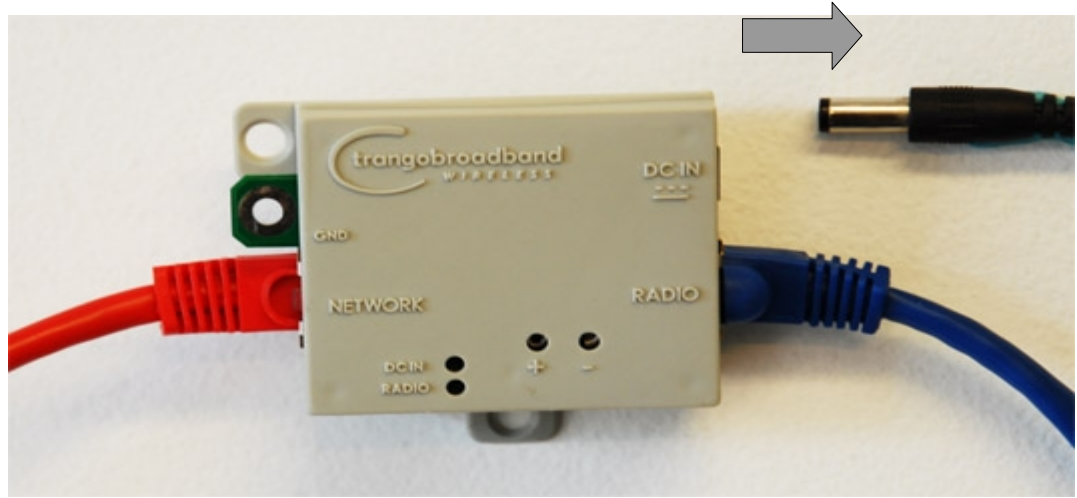
Above: Linksys Below: Dlink – interfaces vary from model to model



After changes: Save Settings
> power off / power on

If you cannot access your router, reset it to its factory settings by inserting and holding a sharp object to its RESET hole for 20 seconds while the router is turned on.

How to restart your connection



It may be necessary to occasionally restart your connection after extreme weather, equipment changes or long periods of no usage.

1.) Picture 1 shows a Jbox (POE). Yours may look different, but they all have same functionality. Two (thicker) network cables and one (thinner) power cord. Leave network cables attached. **Unplug the power cord.**



2.) Picture 2 shows a typical home network router. **Unplug the (thin) power cord.**

3.) Your connection is now turned off. **Wait at least 20 minutes.**



4.) **Plug in the power cord to your Jbox (POE)**

Wait 2 minutes.

5.) **Plug in the power cord to your home router.**

Restart your computer(s).



Using email

When you subscribe to Internet connectivity through ILS, you automatically get a free mail account and free use of the ILS mail servers.

Your ILS mail is free, and you can choose to use it or not to use it.

There are other free mail services that you may want to use: Hotmail, Gmail, Qmail, YahooMail, all work well with connectivity through ILS. If you use a mail service other than ILS, please notify accounts@ils.net of your non-ILS email address, so you still receive your invoices and other important notices from ILS.

Using ILS WebMail

The easiest way to access your ILS mail account is through our home page. Start a web browser, go to <http://www.ils.net/> and click the **MAIL** button on the upper left corner. You come to the login page. Type in your username - not email address - just username in lower case letters, no spaces or extra characters. Then the password.

The ILS webmail window opens up. On the left you see the different folders, the first one being INBOX. WebMail opens in INBOX. In the middle of the window, you see messages that have arrived for you.

To read a message, click on the message itself. To get back to the INBOX, click "Message list". Mark messages by checking the little box in front of them, from the right click "Delete". If there are no messages, it says "this folder is empty".

To send a mail: click compose, a new window opens up. Easy. Type in the receivers email address in the To: field, add a subject then the message itself to the text area. When you are done, click "Send".

Deleted messages are not really deleted. They are stored in the "Trash" folder, just in case. Keep the Trash and other folders trimmed. Delete all unwanted mail from your folders as often as possible because **once the quota is reached, mail stops working**.

Note that the mail folders are in our server, not in your computer. Below each message, you have the option "to download this as a file" to your own computer. This is very important, the mail folders are for temporary keeping only. ILS takes no responsibility of mail left in the ILS mail server.

You can access your ILS Webmail from anywhere, any computer that is connected to the Internet and has a working web browser in it. The Webmail is great for those who get a few messages per day, mostly text based mail. If you want to send and receive attachments, and handle a large number of messages, you should use a mail program installed in your computer (see below).

Mail Program (Windows Live Mail, Thunderbird) Settings

There are dozens of different free mail programs available for Windows, Mac and Linux. The most common ones already installed are: Windows XP: Outlook Express Windows Vista: Windows Mail Windows 7: Windows Live Mail Mac OS: Mac Mail Linux: Thunderbird, Evolution

The settings needed for all mail programs are the same:

Username (account), password, Incoming (POP3 or IMAP) mail server, Outgoing (SMTP) mail server.

Incoming (POP3 or IMAP) mail server:
Server name: mail.ils.net
Port: 110 (POP3) or 143 (IMAP)
Security: none
Authentication: clear text password

Outgoing (SMTP) mail server:
Server Name: mail.ils.net
Port: 25
Security: none
Authentication: no authentication

The ILS Incoming mail server will allow you to check your mail from any computer (non-ILS-connectivity). If you are not sure whether to use POP3 or IMAP, use POP3.

The ILS Outgoing mail server will allow only ILS connected machines to send mail. Example: Your iPhone when connected to your ILS based home WiFi network can send mail. When it is connected through its Telus or Bell 3G cellular, it has to use Telus or Bell Outgoing mail server.